

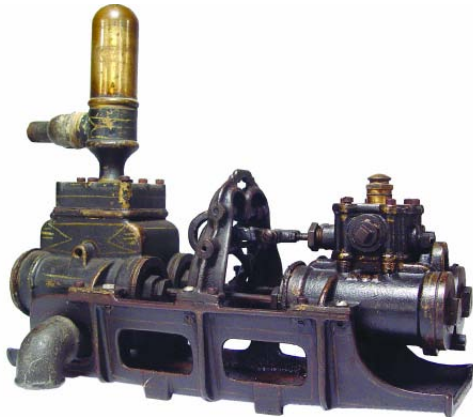
Transportation & Technology Auction

THE ADDENDUM

ADDITIONS TO THE SALE:



3A A FINE AMERICAN STEAM GAUGE WITH ENGRAVED BOX BED ENGINE. This gauge appears to be new old stock in excellent condition without any nicks, abrasion, etc. with an 8" diameter threaded bezel, with a 6 1/4" diameter glass panel revealing an engraved, silvered face with a highly detailed circa 1850s box-bed horizontal steam engine in the design of an early Putnam, with details including a Watt governor, multi-spoked fly-wheel, etc. The face engraved with scale reading: 0-160 PSI with ornate filigree surrounding text including "American Steam Gauge Co., Boston, Sole Proprietors and Manuf's of the Ashcroft Steam Gauge, Bourdon's Patent August 3, 1852, T.W. Lane's improvement patented Feb. 22, 1859." Other details include an ornate hand with spade pointer and crescent moon opposite end, 1/4" N.P.T. fitting, mounted in an all-brass 7 1/2" diameter case with an 8 1/2" diameter backing plate. The quality of engraving is remarkable showing no signs of degradation or loss of detail. (See photo).



63A AN EXTREMELY FINE ORIGINAL GOULD'S BRONZE DUPLEX WATER LIFTING PUMP, in exceptional original condition retaining 98% of original paint, patina and bright work, model no. 1, known as the water lifter, the pump acts as a hydraulic pumping engine operated by city water pressure, for pumping water to a storage tank. Details include two pump and two power cylinders each double-acting with adjustable packing glands, brass air chamber, rocker arms and other fine details. With an ornate cast center-mounted cross support bracket all mounted on a cast iron base. These pumps were often wall-mounted on ornate brackets. Specifications include power cylinders each of 2 1/2" diameter bore with pump cylinders of 1 1/2" bore, stroke approximately 3". This small early pump or water motor will pump approximately 165 gallons per hour at 50 R.P.M. Dimensions: overall height to top of air chamber – 16"; overall length of bedplate – 17 1/2"; width of bedplate – 6"; overall height to top of ornate cross frame – 9"; overall width – 7"; estimated weight – approximately 60 lbs. This is an exceptionally fine, seldom seen early bronze pump. (See photo).

Also included with this item is an original 326 pg. Gould's Manufacturing Company highly illustrated and engraved catalogue with an image of the most modern version of the duplex water lifting pump on page 133. The catalogue with a heavy board cover measures 8" x 7 1/4", catalogue no. F, Seneca Falls, New York, USA, in very good condition with a present though partially detached cover along spine. The catalogue is in exceptional condition and offers a treasure trove of engravings and illustrations of Gould products and related accessories.



64A A FINE VAILE & KIMES DUPLEX WATER LIFTING PUMP, with twin power cylinders each of approximately 2 3/4" bore x 2" stroke with water cylinders each of approximately 2 1/2" bore x 3" stroke. Details include heavy brass cylinder heads, brass adjustable packing glands, brass rods, overhead valve chest with internal shuttle-design valves, Dayton, OH, Class D. This early pump is mounted on a 20" x 6" cast iron bedplate, complete with cylinder condensate valves intact (note: one handle missing). Dimensions: overall length – 21"; overall height to top of inlet fitting – 11"; overall width – 7"; estimated weight – 80 lbs. (See photo).



110A A FINE EARLY SET OF EDWARDIAN BLERIOT AUTOMOBILE LIGHTS, all in what appears to be exceptional condition. Each with Bleriot's maker's plate reading: "Brevete S.G.D.G. Depose, BLERIOT, Paris, 14-16 Rue Duret. The matched pair of headlights of carbide or acetylene design stamped 'Regd. No. 423912". Details include: each with an 11" diameter hinged brass bezel, 8½" diameter beveled glass panel revealing a concave silvered reflector with center suspended 3½" diameter magnifying element both intact, top-mounted ventilated monitors each with maker's plate reading "Bleriot" in raised letters. Each headlight with an 8" diameter section, with second tag reading: "Weldhen & Bleriot, Sole Concessionnaires for the British Empire, 54 Longacre, London, W.C."

The third item in this important lot is a Bleriot side or tail lamp in what appears to be exceptional condition. Details include a hinged 4" diameter bezel with ¾" glass panel revealing a protruding wick holder with under-mounted 5" diameter removable kerosene reservoir complete with wick adjustment knob, 3" diameter ruby red convex glass panel, overhead double-tiered ventilated monitor with 6½" wide bail handle with opposite lens section with Bleriot tag matching the headlights described above. Dimensions: overall height to top of bail handle – 11"; length – 5½"; width – 7". Each complete with mounting brackets and stop screws. (See photos).



121A AN ELEGANT MODEL OF J.P. MORGAN'S PRIVATE STEAM YACHT CORSAIR IV, with an expertly planked mahogany deck, built-up cabins and detailed launches and lifeboats hung from davits. Other details include ventilator cowl, winch, deck plates, pennants, passenger benches, wood-capped deck rails, binnacle, engine order telegraphs, cleats, davits, etc. Mounted in a mahogany and glass display case with marquetry inlay and custom table stand. Model dimensions: 56" L x 16" W x 57" H. (See photo).



122A A SPECTACULAR MODEL OF THE PRESIDENTIAL STEAM YACHT MAYFLOWER, with a planked deck, built-up cabins, lifeboats on davits, brass fittings etc. Model is deep red below the waterline and ivory above. Mounted in a mahogany and glass display case with marquetry inlay and custom table stand. Case dimensions: 58" L x 15" W x 50"H. (See photo).

CATALOGUE CORRECTIONS:

Page 43: Incorrect spelling in item number 111: A PAIR OF PA CIRCA-1905. . . Should read:

111 A PAIR OF P.H. CIRCA-1905 BRASS EDWARDIAN AUTOMOBILE HEADLAMPS. . .

Page 67: Incorrect item number 157. Should read:

158 AN INTERESTING LOT OF EDISON-RELATED EPHEMERA INCLUDING FIVE PHOTOGRAPHS AND TWO STOCK CERTIFICATES. . .

Page 86: Item 224. Incorrect spelling: Webber. Should read:

224 A CIRCA-1875 COLOR LITHOGRAPH I.H.C. CO. WEBER WAGONS ADVERTISING POSTER. . .